

# PALEO FOOTNOTES

NEWSLETTER OF THE PALEONTOLOGICAL SOCIETY OF AUSTIN

VOLUME 16 | NUMBER 2

FEBRUARY 2021



## President's Note

Hope you all are getting out on some of these fine winter days to do some collecting. All too soon it will be 100 degrees again. I met up with Jamie Shelton and we hunted the Glen Rose looking for some rare echinoids last weekend. The morning breeze was brisk but once that sun was shining on us, it was perfect. I don't know why but the low-angled winter light always seems better for finding sea urchins. The echinoids pop out as the little shadows of their tubercles are highlighted.

We will be doing a Fossil Collecting 101 Presentation for the next meeting. (continued on page 2)

## This Month's Talk

**Fossil Collecting 101:** Introduction to the hobby and science of amateur paleontology

**Part 1 - FINDING FOSSILS**  
Presented by **Erich Rose**

We will be returning this year to our "how to" series on fossil collecting and amateur paleontology. The most common question that all of us members with years of experience get is "How do you know where to look?" Well I will try to answer that question as well as a few others such as: where can I legally collect, what tools do I need and a bit about safety as well. (continued on page 2)

FEBRUARY 2021

**PSoA Regular February Meeting**  
Tuesday February 16, 2021  
Presentation: **Fossil Collecting 101**  
with Erich Rose

Meeting will be held on Zoom

**Join Zoom Meeting**  
<https://us02web.zoom.us/j/81755171672?pwd=M2tmaWxYdy85T21PVnpTRGRDVGpXUT09>

Meeting ID: 817 5517 1672  
Passcode: 128722

**PSoA February Field Trip**  
**POSTPONED 1 WEEK**  
**UPDATE:** Saturday February 27, 2021  
Loop 360 Road Cuts (see page 2)

## President's Note

---

(continued from page 1) I am dusting off my slides from a few years back and we have enough new members to make it worthwhile. I also hope some of the more experienced members attend and can add in their knowledge as well.

There was also some talk about maybe doing some presentations on what fossils can be found in each formation. If that sounds like a valuable thing let me know and we will get the ball rolling on that.

Jamie and Melvin will be posting the field trip schedule in this issue. As always some of it will be tentative as conditions change. Looking forward to seeing you all next Tuesday.

### Erich Rose

PSoA President

## This Month's Talk

---

(continued from page 1) Hopefully, plenty of our other experienced members will chime in with their own advice as well to round out this presentation aimed at our newer members, young and old.

We will follow up during the year with other presentations on subjects such as identifying and cataloging and cleaning and storing your fossils.

So I hope you all can join me this next Tuesday and bring your questions. I'll do my best to answer them and help everyone learn more about how to find your own fossils.

This Month's Speaker: **Erich Rose**

Erich has been collecting fossils since he was eight years old back in Ohio. Fifty-four years later he is still as fascinated by those remnants of ancient life as when he first turned over a rock and noticed the obvious outline of a coral in Dayton, Ohio of all places. Erich has been involved with various paleontological societies over the years as field guide editor, newsletter editor and currently as the president of the Paleontological Society of Austin. His favorite thing is telling new people about the wonders of the ancient earth and how they can enjoy them as well.

## Minutes from January's Meeting

---

Linda gave a great talk, and we had great attendance in the meeting. (See page 4 for a link to the presentation)

The board also met in January and went over details for the Fossil Fest contingency plan and how to put on a show safely, as well as finalized the budget and created tentative field trip schedule. Join us on Zoom monthly!

### Emelia Rose

PSoA Secretary

## Save the Date - April Online Auction!

---

We will be hosting an Online Auction this year! Sunday April 25th from Noon till 5pm, the Society Auction will shift to Online at the Facebook PSoA Members Group. Next month I will post information about how it will all work. So be thinking about what you might donate to the Auction! And save your pennies for what you might bid on!

If you are not in the group yet, here is the link:

<https://www.facebook.com/groups/153405801141>

Just request to join and we will add you in!

### Jamie Shelton

Field Trip Co-Chair

## 2021 Field Trip Schedule

---

January:	<b>Whiskey Bridge</b> - Eocene
February:	<b>Austin Loop 360 Road Cuts</b> - Walnut
March:	<b>Brownwood Spillway</b> - Pennsylvanian
April:	<b>Harker Heights</b> - Walnut
May:	<b>Canyon Lake</b> - Glen Rose <b>Johnson City Road Cut</b> - Glen Rose
June:	<b>Little Walnut Creek</b> - Austin Chalk
July:	<b>Bandera</b> - Glen Rose
August:	<b>Mammoth Museum</b> <b>Waco Pit</b> - Del Rio
September:	<b>Brady Road Cut</b> - Pennsylvanian <b>Santa Anna</b> - Pennsylvanian
October:	<b>Moody Road Cut</b> - Comanche Peak <b>Evant Road Cut</b> - Comanche Peak
November:	<b>Brownwood or Jacksboro</b> - Pennsylvanian
December:	TBD

### Jamie Shelton + Melvin Noble

Field Trip Co-Chairs

## February 2021 Field Trip: Austin Loop 360 Roadcuts

---

We will stay close to home this month, hoping the weather will cooperate! We'll meet at the Austin Loop 360 Roadcut which is Walnut Formation, at 9am. We will park on the Northbound side of Loop 360 directly across from Pascal Lane. Make sure you pull completely off the shoulder when you park. The roadcut is easily accessible but it is fairly high up, so be safety conscious at all times! The area we hunt can be steep so wear good shoes. Fossils will include gastropods, echinoids, corals, bivalves and sometimes crab material. Small collection boxes are a good idea as well as small digging implements. This is primarily surface collecting, so no major digging.

# January 2021 Field Trip Report: Whiskey Bridge

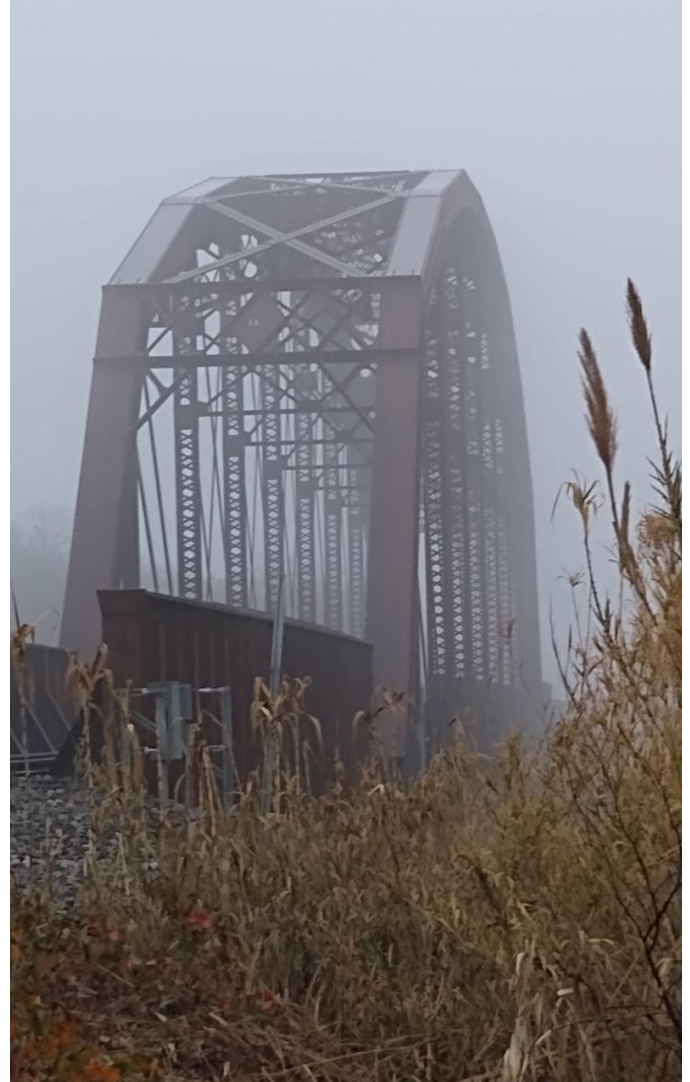
On what started out a cloudy and a little bit foggy day, turned into a nice pleasant cool but warm enough to really enjoy collecting fossils type of day. Melinda and Frederick Falk, Alan Keith, Gary and Cathy Rylander, Jamie Shelton, Brian Bedrosian with sons Anders and Emerson, Yoli and Will Lins, Rose Farmer, Noah Harrington, Gary Vliet, Lorne Ledger, Nadia Dapp, Heather Aziz, Grady Parks, Jeanne Bowman, Becki Smith and me, Melvin Noble came to collect at Whiskey Bridge. Everybody wore a mask and we spread out, then the collecting began. Even though it had rained several days before, the ground was in pretty good shape, especially in the sandy areas. There were some slippery spots but if a person was real careful it was solid. Please be careful on these trips, we do not want anyone to get hurt. It was plenty dry enough if a person stayed in a safe area.

There was some different types of coral found that some of us had not found before or seen at this site and we have not identified yet. I also found a coral I have not seen at this site. It's always great when people find something new for their collection, it makes the trip worthwhile. I believe Rose found a *Discotrochus Orbignianus* (Button Coral-fig.2). Brian Bedrosian found some *Turbinolia pharetra* (solitary coral) and a echinoid test (fig. 1), stuck in hard matrix. Brian's son Emerson found a Phylum Coelentera (Colonial coral). Several species of Eocene fossils were found as usual this trip including some nice *Conus* shells (fig. 3) and a nice Clam (fig. 4) found by Frederick Falk.

Toward 1 pm. most people started drifting off but, it was such a nice day that a few people stayed on. I asked many people how they enjoyed it and they said they were having a great time. It's always nice to get out and enjoy collecting fossils.

A good identification book on the eocene fossils of Whiskey Bridge and other similar deposits in Texas is *Middle Eocene Claiborne Group Invertebrate Fossils* by John and Barbara Emerson - see page 4 for purchasing details.

**Melvin Noble**  
Field Trip Co-Chair



Whiskey Bridge draped in morning mist



fig 1: Unidentified partial echinoid test found by Brian Bedrosian

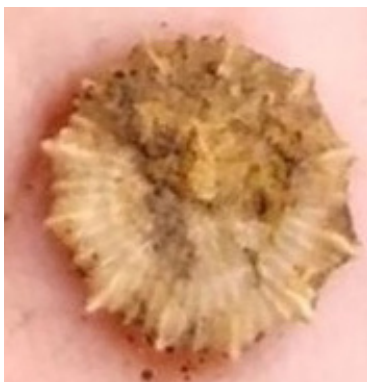


fig 2: *Discotrochus orbignianus* button coral found by Rose Farmer



fig 3: *Conus* gastropod, one of many found that day

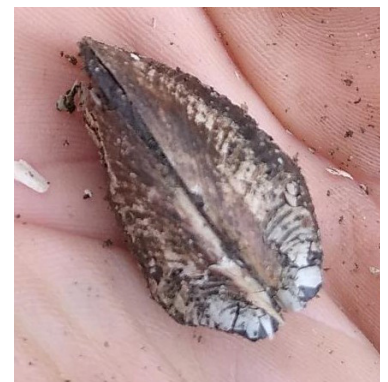
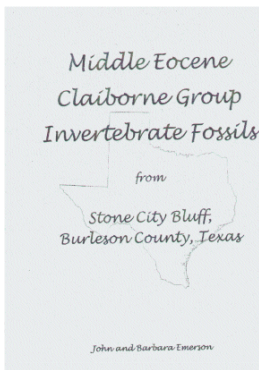


fig 4: Unidentified bivalve found by Frederick Faulk



## Odds and Ends

### Whiskey Bridge / Eocene Resources



**Middle Eocene Claiborne Group Invertebrate Fossils from Stone City Bluff, Burlison County Texas** by John and Barbara Emerson . This self published volume catalogs over 200 species known to come from this exposure. All specimens are described in detail and shown in black and white photographs. It is available from the Houston Gem and Mineral Society website for \$20 (paperback copy) or \$10 (digital download).<sup>1</sup>

**Stone City Member, Middle Eocene, Clairborne Group, Stone City Bluff, Burlison Co., Texas Main Glauconite Bed (MGB) Study Guide** by James E. Flis and Christopher J. Flis (2015 Rights Reserved v. 1.1) This study guide available on the Houston Geological Society website is great primer on the exposure and provides a faunal menu with full color photographs.<sup>2</sup>

- <https://hgms.org/product/middle-eocene-claiborne-invertebrate-fossils/>
- [https://www.hgs.org/sites/default/files/MGB\\_FLIS\\_2\\_23\\_15.pdf](https://www.hgs.org/sites/default/files/MGB_FLIS_2_23_15.pdf)
- <https://www.austinpaleo.org/papers.html>
- <https://www.lulu.com/en/us/shop/john-mcleod-and-mark-mckinzie/color-field-guide-to-pennsylvanian-fossils-of-north-texas/paperback/product-wvgned.html?page=1&pageSize=4>

The purpose of the Paleontological Society of Austin, a 501(c)(3) non-profit organization, is the scientific education of the public, the study and preservation of fossils and the fossil record, and assistance to individual, groups and institutions interested in various aspects of paleontology. Meetings of the Paleontological Society of Austin are normally held on the third Tuesday of each month at 7:00 p.m. in the Austin Gem and Mineral Society building located at 6719 Burnet Ln. in Austin, Texas. The public is welcome to attend. Visit [austinpaleo.org](http://austinpaleo.org) for more information.

*Please note, due to COVID 19, in person meetings have been temporarily paused, and monthly meetings are instead being held on Zoom. Please see instructions above to attend the meetings virtually. Please note all virtual meetings are recorded and the Society may elect to publish the video of these meetings, in part or in total, to the Societie's website or another publically accessible venue as benefits the goals of the club listed above.*

#### Membership Information

Annual Dues: \$18/individual  
\$24/family  
\$12/associate (non-voting, receiving newsletter)

Send payment to: Treasurer, Paleontological Society of Austin,  
P.O. Box 90791, Austin, TX 78749-0791

PSOA Web Site: [www.austinpaleo.org](http://www.austinpaleo.org)  
Webmaster: [Gordon Gallagher, webmaster@austinpaleo.org](mailto:Gordon.Gallagher@austinpaleo.org)  
Facebook: <https://www.facebook.com/austinpaleo>  
Twitter: @Austin\_Paleo

#### 2021 Officers

President  
Vice President  
Treasurer  
Secretary  
Field Trips Programs  
Editor  
Webmaster  
Show Chair

Erich Rose  
Heather Radford  
Mike Smith  
Emelia Rose  
Melvin Noble & Jamie Shelton  
Paul Hammerschmidt  
Brian Bedrosian  
Gordon Galligher  
Heather Radford

[president@austinpaleo.org](mailto:president@austinpaleo.org)  
[vicepresident@austinpaleo.org](mailto:vicepresident@austinpaleo.org)  
[treasurer@austinpaleo.org](mailto:treasurer@austinpaleo.org)  
[secretary@austinpaleo.org](mailto:secretary@austinpaleo.org)  
[fieldtripchair@austinpaleo.org](mailto:fieldtripchair@austinpaleo.org)  
[programchair@austinpaleo.org](mailto:programchair@austinpaleo.org)  
[editor@austinpaleo.org](mailto:editor@austinpaleo.org)  
[webmaster@austinpaleo.org](mailto:webmaster@austinpaleo.org)  
[showchair@austinpaleo.org](mailto:showchair@austinpaleo.org)

Science Advisors:

Pamela R. Owen, PhD.  
James T. Sprinkle, PhD.

[powen@mail.utexas.edu](mailto:powen@mail.utexas.edu)  
[echino@mail.utexas.edu](mailto:echino@mail.utexas.edu)

Permission to copy material printed herein is granted provided proper credit is given to the author and source.  
The Paleontological Society of Austin is a member of and affiliated with:

**South Central Federation of Mineral Societies & American Federation of Mineralogical Societies**

